

Size range: ½" - 2"



This product line of ductile iron threaded fittings is the perfect complementary extension of our grooved fittings assortment for all threaded piping connections in the sizes ½" up to 2".

Available models from stock (BSPT):

90, 90R, 120, 130, 130R, 180, 180R, 240, 241, 270, 280, 291.

Optional models on request (NPT):

90N, 90RN, 120N, 130N, 130RN, 180N, 180RN, 240N, 241N, 270N, 280N, 291N.

Approvals

- FM approved to FM standard 1920.
- UL EX29487 listed.

Design

- Standard: dimensions and tolerances based on EN 10242 / ISO 49.
- Optional: ASME B16.3.
- Test pressure: 10 MPa / 100 bar / 1450 psi.

Threads

- Standard: BSPT thread (ISO 7-1 / EN10226).
- Optional: NPT thread (ANSI / ASME B1.20.1).

Working pressure / temperature

- Water in fire sprinkler systems: 3,45 MPa / 34,5 bar / 500 psi (FM/UL).
- Other systems:

Size	Fluid	Working pressure up to 120°C	Working pressure up to 300°C
Up to 1"	Gas group 1	1,6 MPa / 16 bar / 232psi	1,3 MPa / 13 bar / 189 psi
Equal or greater than 1"	Gas group 1	X	X
Full range	Gas group 2	1,6 MPa / 16 bar / 232 psi	1,3 MPa / 13 bar / 189 psi
Full range	Fluid group 1	3,45 MPa / 34,5 bar / 500 psi	2 MPa / 20 bar / 290 psi
Full range	Fluid group 2	3,45 MPa / 34,5 bar / 500 psi	2,5 MPa / 25 bar / 363 psi

(Group 1 & 2: according to directive 2014/68/EU)

- Design test pressure: 10 MPa / 100 bar / 1450 psi.
- Production tightness test (100%): 0,1 MPa / 1,0 bar / 14,5 psi.

Material

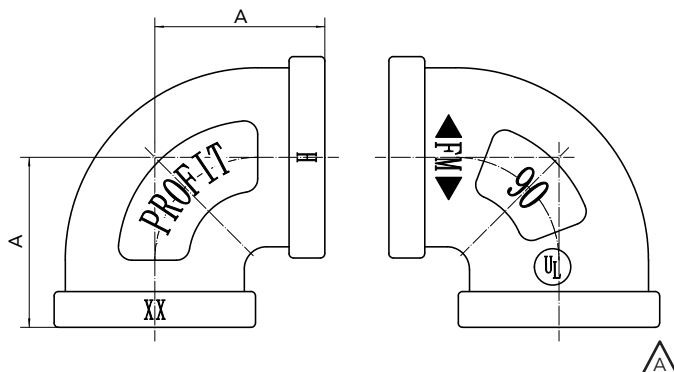
Standard from stock:

- Ductile iron conform to ASTM A536 gr 65-45-12 (EN-GJS-450-10), sandblasted and hot dip galvanised (EN ISO 1461).

Optional surface treatments (only available in container directly from factory):

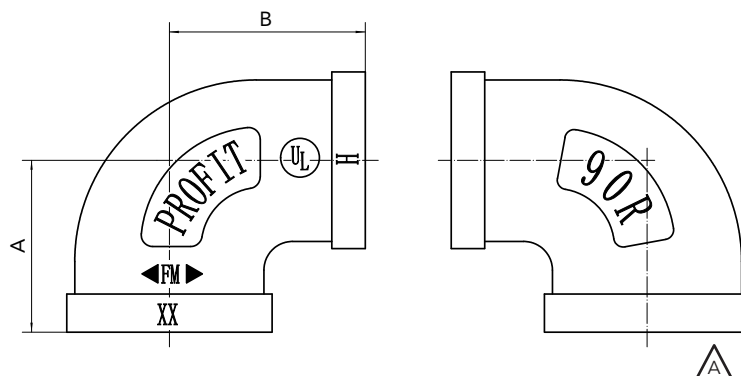
- Black (without treatment).
- Powdercoated in the available colours: red, white, blue, green, silver, grey, orange, yellow, golden.

Elbow 90°, type 90 • On stock



Reference		Size	DN	Dimensions	Weight (g)	Marking	
Galva	Black			A		BSPT	NPT
TF90G½	TF90B½	½ "	15	28	82	90	90N
TF90G¾	TF90B¾	¾ "	20	33	132	90	90N
TF90G1	TF90B1	1 "	25	38	225	90	90N
TF90G1¼	TF90B1¼	1-¼ "	32	45	390	90	90N
TF90G1½	TF90B1½	1-½ "	40	50	440	90	90N
TF90G2	TF90B2	2 "	50	58	668	90	90N

Reducing elbow 90°, type 90R • On stock

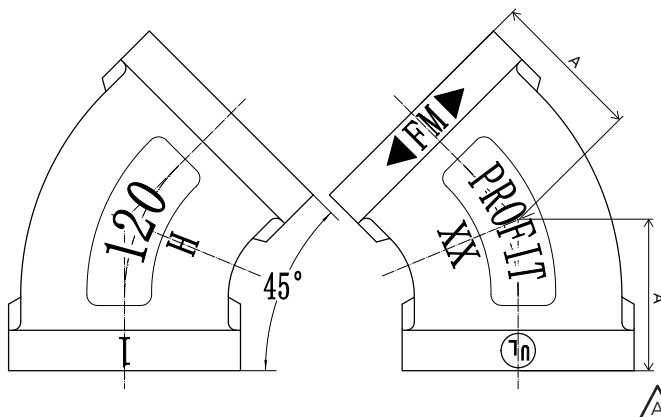


Reference		Size	DN	Dimensions		Weight (g)	Marking	
Galva	Black			A	B		BSPT	NPT
TF90RG¾-½	TF90RB¾-½	¾" x ½"	20x15	30	31	103	90R	90RN
TF90RG1-½	TF90RB1-½	1" x ½"	25x15	32	34	132	90R	90RN
TF90RG1-¾	TF90RB1-¾	1" x ¾"	25x20	35	36	160	90R	90RN
TF90RG1¼-½ *	TF90RB1¼-½ *	1-¼" x ½"	32x15	32	37	185	90R	90RN
TF90RG1¼-¾	TF90RB1¼-¾	1-¼" x ¾"	32x20	36	41	224	90R	90RN
TF90RG1¼-1	TF90RB1¼-1	1-¼" x 1"	32x25	40	42	240	90R	90RN
TF90RG1½-½ **	TF90RB1½-½ **	1-½" x ½"	40x15	34	41	246	90R	90RN
TF90RG1½-¾ *	TF90RB1½-¾ *	1-½" x ¾"	40x20	37	42	278	90R	90RN
TF90RG1½-1	TF90RB1½-1	1-½" x 1"	40x25	42	46	307	90R	90RN
TF90RG1½-1¼	TF90RB1½-1¼	1-½" x 1-¼"	40x32	46	48	369	90R	90RN
TF90RG2-½ **	TF90RB2-½ **	2" x ½"	50x15	35	47	349	90R	90RN
TF90RG2-¾ *	TF90RB2-¾ *	2" x ¾"	50x20	40	48	432	90R	90RN
TF90RG2-1 *	TF90RB2-1 *	2" x 1"	50x25	43	50	418	90R	90RN
TF90RG2-1¼ *	TF90RB2-1¼ *	2" x 1-¼"	50x32	47	53	528	90R	90RN
TF90RG2-1½	TF90RB2-1½	2" x 1-½"	50x40	52	56	546	90R	90RN

* FM and UL approval only according to ASME B16.3.

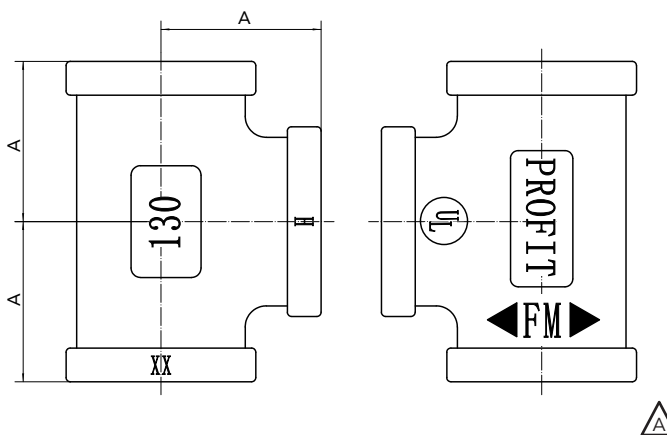
** No UL approval / no FM approval according to ASME B16.3.

Elbow 45°, type 120 • On stock



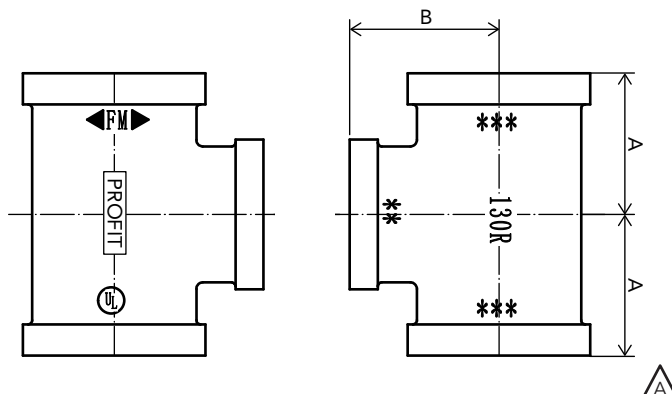
Reference		Size	DN	Dimensions	Weight (g)	Marking	
Galva	Black			A		BSPT	NPT
TF120G½	TF120B½	½"	15	22	70	120	120N
TF120G¾	TF120B¾	¾"	20	25	112	120	120N
TF120G1	TF120B1	1"	25	28	176	120	120N
TF120G1¼	TF120B1¼	1-¼"	32	33	274	120	120N
TF120G1½	TF120B1½	1-½"	40	50	362	120	120N
TF120G2	TF120B2	2"	50	58	598	120	120N

Equal tee, type 130 • On stock



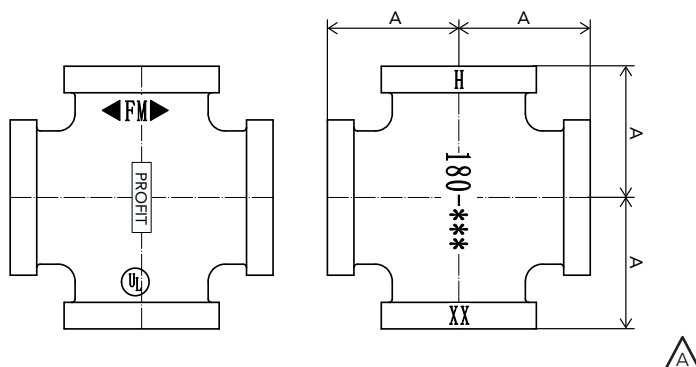
Reference		Size	DN	Dimensions	Weight (g)	Marking	
Galva	Black			A		BSPT	NPT
TF130G½	TF130B½	½"	15	28	114	130	130N
TF130G¾	TF130B¾	¾"	20	33	185	130	130N
TF130G1	TF130B1	1"	25	38	377	130	130N
TF130G1¼	TF130B1¼	1-¼"	32	45	488	130	130N
TF130G1½	TF130B1½	1-½"	40	50	588	130	130N
TF130G2	TF130B2	2"	50	58	892	130	130N

Reducing tee, type 130R • Container only



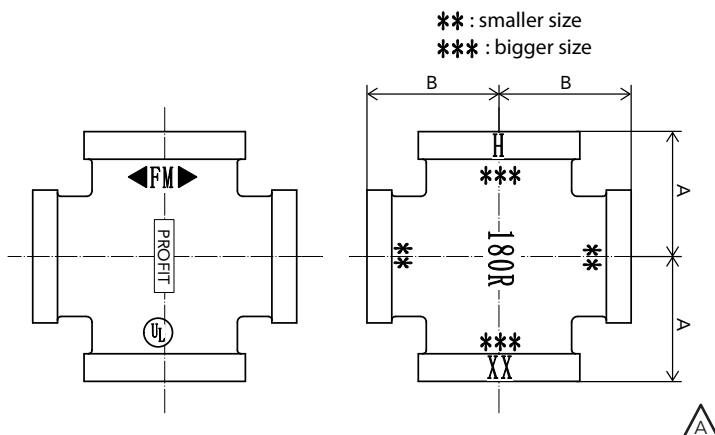
Reference		Size	DN	Dimensions		Weight (g)	Marking	
Galva	Black			A	B		BSPT	NPT
TF130RG¾-½	TF130RB¾-½	¾" x ½"	20x15	30	31	153	130R	130RN
TF130RG1-½	TF130RB1-½	1" x ½"	25x15	32	34	205	130R	130RN
TF130RG1-¾	TF130RB1-¾	1" x ¾"	25x20	35	36	248	130R	130RN
TF130RG1¼-½	TF130RB1¼-½	1-¼" x ½"	32x15	34	38	304	130R	130RN
TF130RG1¼-¾	TF130RB1¼-¾	1-¼" x ¾"	32x20	36	41	316	130R	130RN
TF130RG1¼-1	TF130RB1¼-1	1-¼" x 1"	32x25	40	42	384	130R	130RN
TF130RG1½-½	TF130RB1½-½	1-½" x ½"	40x15	36	42	395	130R	130RN
TF130RG1½-¾	TF130RB1½-¾	1-½" x ¾"	40x20	38	44	418	130R	130RN
TF130RG1½-1	TF130RB1½-1	1-½" x 1"	40x25	42	46	456	130R	130RN
TF130RG1½-1¼	TF130RB1½-1¼	1-½" x 1-¼"	40x32	46	48	520	130R	130RN
TF130RG2-½	TF130RB2-½	2" x ½"	50x15	38	48	548	130R	130RN
TF130RG2-¾	TF130RB2-¾	2" x ¾"	50x20	40	50	596	130R	130RN
TF130RG2-1	TF130RB2-1	2" x 1"	50x25	44	52	650	130R	130RN
TF130RG2-1¼	TF130RB2-1¼	2" x 1-¼"	50x32	48	54	696	130R	130RN
TF130RG2-1½	TF130RB2-1½	2" x 1-½"	50x40	52	55	732	130R	130RN

Equal cross, type 180 • Container only



Reference		Size	DN	Dimensions		Weight (g)	Marking	
Galva	Black			A			BSPT	NPT
TF180G½	TF180B½	½"	15	28		133	180	180N
TF180G¾	TF180B¾	¾"	20	33		209	180	180N
TF180G1	TF180B1	1"	25	38		376	180	180N
TF180G1¼	TF180B1¼	1-¼"	32	45		612	180	180N
TF180G1½	TF180B1½	1-½"	40	50		666	180	180N
TF180G2	TF180B2	2"	50	58		1112	180	180N

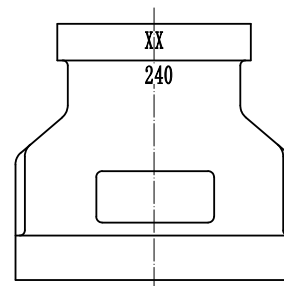
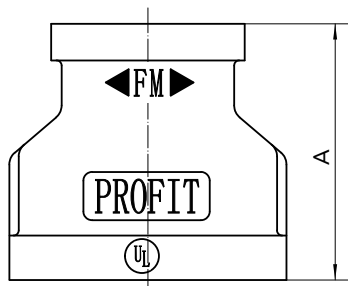
Reducing cross, type 180R • Container only



Reference		Size	DN	Dimensions		Weight (g)	Marking	
Galva	Black			A	B		BSPT	NPT
TF180RG3/4-1/2	TF180RB3/4-1/2	3/4" x 1/2"	20x15	30	31	226	180R	180RN
TF180RG1-1/2	TF180RB1-1/2	1" x 1/2"	25x15	32	34	251	180R	180RN
TF180RG1-3/4	TF180RB1-3/4	1" x 3/4"	25x20	35	36	291	180R	180RN
TF180RG1 1/4-1/2 *	TF180RB1 1/4-1/2 *	1-1/4" x 1/2"	32x15	34	38	313	180R	180RN
TF180RG1 1/4-3/4	TF180RB1 1/4-3/4	1-1/4" x 3/4"	32x20	36	41	364	180R	180RN
TF180RG1 1/4-1	TF180RB1 1/4-1	1-1/4" x 1"	32x25	40	42	473	180R	180RN
TF180RG1 1/2-1/2 *	TF180RB1 1/2-1/2 *	1-1/2" x 1/2"	40x15	36	42	437	180R	180RN
TF180RG1 1/2-3/4 *	TF180RB1 1/2-3/4 *	1-1/2" x 3/4"	40x20	38	44	436	180R	180RN
TF180RG1 1/2-1	TF180RB1 1/2-1	1-1/2" x 1"	40x25	42	46	440	180R	180RN
TF180RG1 1/2-1 1/4 *	TF180RB1 1/2-1 1/4 *	1-1/2" x 1-1/4"	40x32	46	48	646	180R	180RN
TF180RG2-1/2 *	TF180RB2-1/2 *	2" x 1/2"	50x15	38	48	627	180R	180RN
TF180RG2-3/4 *	TF180RB2-3/4 *	2" x 3/4"	50x20	40	50	627	180R	180RN
TF180RG2-1 *	TF180RB2-1 *	2" x 1"	50x25	44	52	710	180R	180RN
TF180RG2-1 1/4 *	TF180RB2-1 1/4 *	2" x 1-1/4"	50x32	48	54	780	180R	180RN
TF180RG2-1 1/2 *	TF180RB2-1 1/2 *	2" x 1-1/2"	50x40	52	55	928	180R	180RN

* FM and UL approval only according to ASME 16.3.

Reducing socket, type 240 • On stock

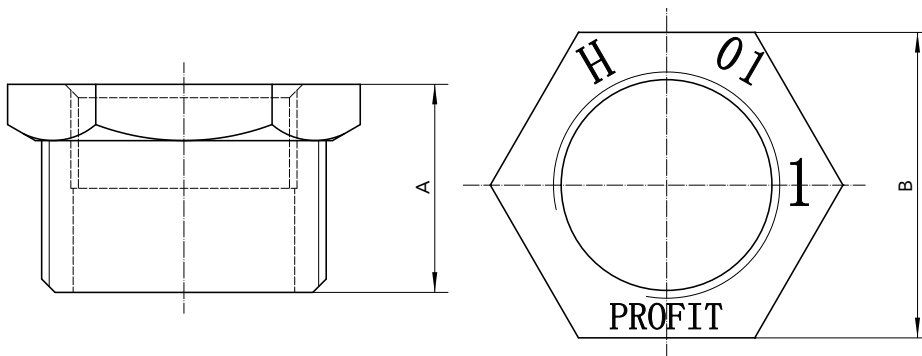


A

Reference		Size	DN	Dimensions	Weight (g)	Marking	
Galva	Black			A		BSPT	NPT
TF240G $\frac{3}{4}$ - $\frac{1}{2}$	TF240B $\frac{3}{4}$ - $\frac{1}{2}$	$\frac{3}{4}$ " x $\frac{1}{2}$ "	20x15	39	90	240	240N
TF240G1- $\frac{1}{2}$	TF240B1- $\frac{1}{2}$	1" x $\frac{1}{2}$ "	25x15	45	128	240	240N
TF240G1- $\frac{3}{4}$	TF240B1- $\frac{3}{4}$	1" x $\frac{3}{4}$ "	25x20	45	140	240	240N
TF240G1 $\frac{1}{4}$ - $\frac{1}{2}$	TF240B1 $\frac{1}{4}$ - $\frac{1}{2}$	1- $\frac{1}{4}$ " x $\frac{1}{2}$ "	32x15	50	174	240	240N
TF240G1 $\frac{1}{4}$ - $\frac{3}{4}$	TF240B1 $\frac{1}{4}$ - $\frac{3}{4}$	1- $\frac{1}{4}$ " x $\frac{3}{4}$ "	32x20	50	210	240	240N
TF240G1 $\frac{1}{4}$ -1	TF240B1 $\frac{1}{4}$ -1	1- $\frac{1}{4}$ " x 1"	32x25	50	202	240	240N
TF240G1 $\frac{1}{2}$ - $\frac{1}{2}$	TF240B1 $\frac{1}{2}$ - $\frac{1}{2}$	1- $\frac{1}{2}$ " x $\frac{1}{2}$ "	40x15	55	223	240	240N
TF240G1 $\frac{1}{2}$ - $\frac{3}{4}$	TF240B1 $\frac{1}{2}$ - $\frac{3}{4}$	1- $\frac{1}{2}$ " x $\frac{3}{4}$ "	40x20	55	229	240	240N
TF240G1 $\frac{1}{2}$ -1	TF240B1 $\frac{1}{2}$ -1	1- $\frac{1}{2}$ " x 1"	40x25	55	225	240	240N
TF240G1 $\frac{1}{2}$ -1 $\frac{1}{4}$	TF240B1 $\frac{1}{2}$ -1 $\frac{1}{4}$	1- $\frac{1}{2}$ " x 1- $\frac{1}{4}$ "	40x32	56	255	240	240N
TF240G2- $\frac{1}{2}$	TF240B2- $\frac{1}{2}$	2" x $\frac{1}{2}$ "	50x15	65	374	240	240N
TF240G2- $\frac{3}{4}$	TF240B2- $\frac{3}{4}$	2" x $\frac{3}{4}$ "	50x20	65	361	240	240N
TF240G2-1	TF240B2-1	2" x 1"	50x25	65	390	240	240N
TF240G2-1 $\frac{1}{4}$	TF240B2-1 $\frac{1}{4}$	2" x 1- $\frac{1}{4}$ "	50x32	65	423	240	240N

B

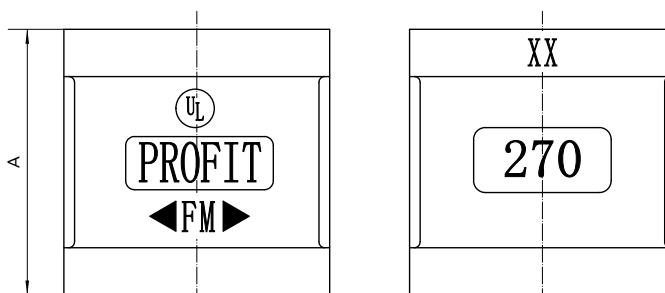
Reducing bush, type 241 • On stock



Reference		Size	DN	Dimensions		Weight (g)	Marking	
Galva	Black			A	B		BSPT	NPT
TF241G¾-½	TF241B¾-½	¾" x ½"	20x15	26	30	50	241	241N
TF241G1-½	TF241B1-½	1" x ½"	25x15	29	35,5	105	241	241N
TF241G1¼-½ *	TF241B1¼-½ *	1-¼" x ½"	32x15	31	45,5	184	241	241N
TF241G1¼-¾	TF241B1¼-¾	1-¼" x ¾"	32x20	31	45,5	162	241	241N
TF241G1¼-1	TF241B1¼-1	1-¼" x 1"	32x25	31	45,5	128	241	241N
TF241G1½-½ *	TF241B1½-½ *	1-½" x ½"	40x15	31	51,5	236	241	241N
TF241G1½-¾ *	TF241B1½-¾ *	1-½" x ¾"	40x20	31	51,5	219	241	241N
TF241G1½-1	TF241B1½-1	1-½" x 1"	40x25	31	51,5	210	241	241N
TF241G1½-1¼	TF241B1½-1¼	1-½" x 1-¼"	40x32	31	51,5	145	241	241N
TF241G2-½ *	TF241B2-½ *	2" x ½"	50x15	35	64	407	241	241N
TF241G2-¾ *	TF241B2-¾ *	2" x ¾"	50x20	35	64	314	241	241N
TF241G2-1 *	TF241B2-1 *	2" x 1"	50x25	35	64	372	241	241N
TF241G2-1¼	TF241B2-1¼	2" x 1-¼"	50x32	35	64	325	241	241N

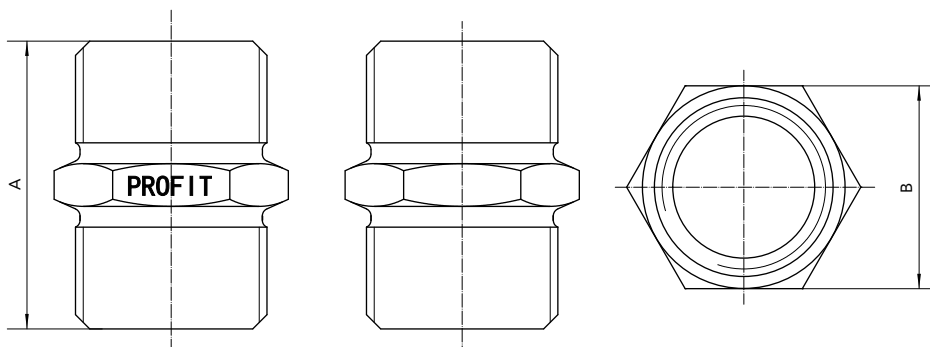
* No FM and UL approval according to ASME B16.3.

Socket, type 270 • On stock



Reference		Size	DN	Dimensions	Weight (g)	Marking	
Galva	Black					BSPT	NPT
TF270G½	TF270B½	½"	15	36	48	270	270N
TF270G¾	TF270B¾	¾"	20	39	98	270	270N
TF270G1	TF270B1	1"	25	45	184	270	270N
TF270G1¼	TF270B1¼	1-¼"	32	50	220	270	270N
TF270G1½	TF270B1½	1-½"	40	55	276	270	270N
TF270G2	TF270B2	2"	50	65	452	270	270N

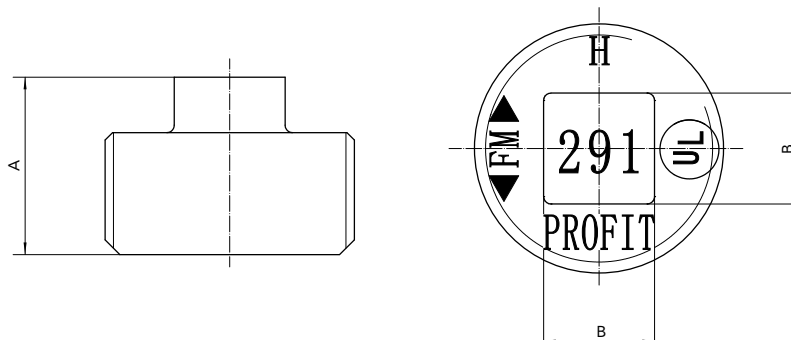
Hexagon nipple, type 280 • On stock



△

Reference		Size	DN	Dimensions		Weight (g)	Marking	
Galva	Black			A	B		BSPT	NPT
TF280G½	TF280B½	½"	15	44	23	54	280	280N
TF280G¾	TF280B¾	¾"	20	47	30	82	280	280N
TF280G1	TF280B1	1"	25	53	36	125	280	280N
TF280G1¼	TF280B1¼	1-¼"	32	57	46	202	280	280N
TF280G1½	TF280B1½	1-½"	40	59	51	228	280	280N
TF280G2	TF280B2	2"	50	68	68	408	280	280N

Plain plug, type 291 • On stock



△

Reference		Size	DN	Dimensions		Weight (g)	Marking	
Galva	Black			A	B		BSPT	NPT
TF291G½	TF291B½	½"	15	25	11	28	291	291N
TF291G¾	TF291B¾	¾"	20	28,5	14	43	291	291N
TF291G1	TF291B1	1"	25	32,5	15	57	291	291N
TF291G1¼	TF291B1¼	1-¼"	32	35,1	18	112	291	291N
TF291G1½	TF291B1½	1-½"	40	37,6	18	149	291	291N
TF291G2	TF291B2	2"	50	40,1	26	235	291	291N

GENERAL INFO

- Installers should be trained or experienced to install and understand the product.
- Before installation, carefully check the product on any damage during shipment or handling.
- Read and understand all technical datasheets and installation instructions before attempting to install, remove or adjust any Profit products.
- Check if the pressure rating of the product is compatible with the service conditions.
- Depressurise and drain the sprinkler installation system before attempting to install, remove or adjust any Profit products.
- Never work on piping systems that are pressurised and / or filled with water or pressurized air.
- Piping Logistics reserves the right to change specifications, designs and / or standard equipment without notice and without incurring in any obligations.
- Use the necessary Personal Protection Equipment (PPE) to avoid personal injury (helmet, safety shoes, goggles and gloves).



Failure to follow these instructions could result in property damage, serious injury or death.

Our product must always be stored in closed and dry environments. Once installed on an above ground sprinkler system, they require no specific maintenance.

REVISION TABLE

Date	△	Notes
28/02/2025		Initial release.
20/03/2025		Page 1 - Addition working pressure.
03/04/2025		Page 1 - New product picture.
09/05/2025		Page 7 - Deleted size 1" x ¾".
09/05/2025		Page 8 - Technical drawing expanded.
16/05/2025		Page 1 - Directive number modified.
15/07/2025		Page 5, 6 & 7 - Correction of the reference.
09/02/2026	A	Page 1 to 8 - Additional information about BSPT and NPT threads.
01/04/2026	B	Page 2 & 6 - Correction of the reference.